

Sport In The Box Support

[Knowledgebase](#) > [Common questions](#) > [How to create new database with old database as template](#)

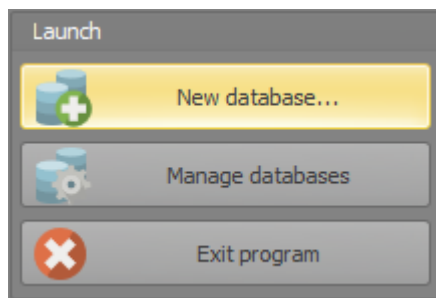
How to create new database with old database as template

Dmitri Peredera - 2023-10-23 - [Comments \(0\)](#) - [Common questions](#)

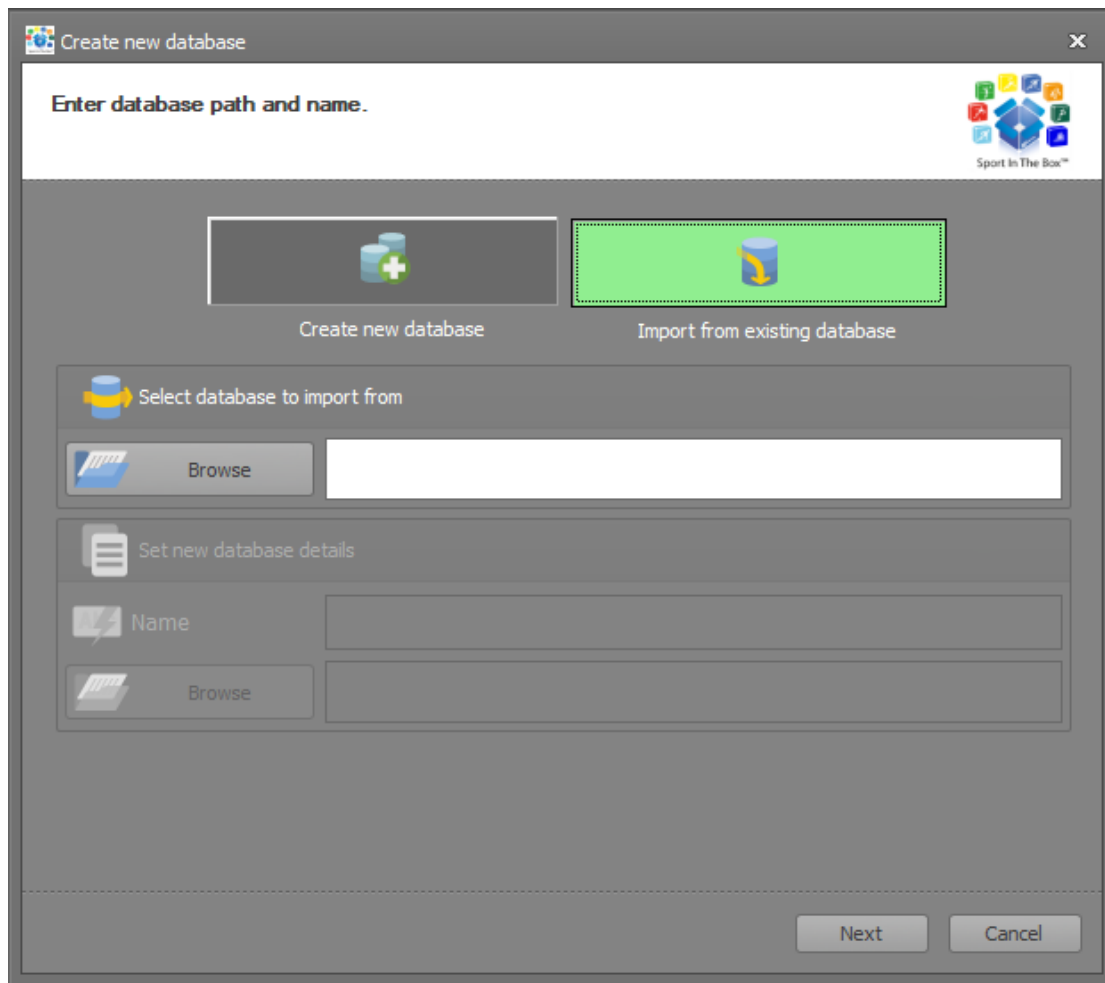
When creating new database, it is sometimes useful to copy configuration from existing database.

Note, **only works for SIB2 files**.

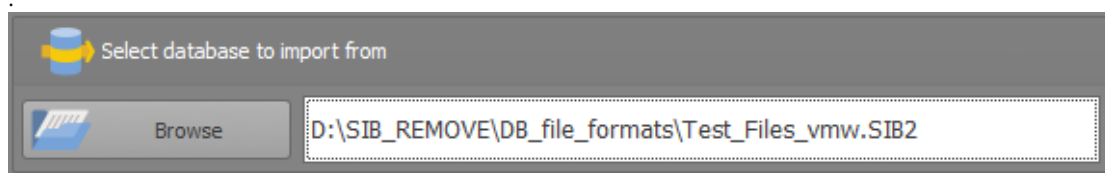
From the start screen, press *New database...*



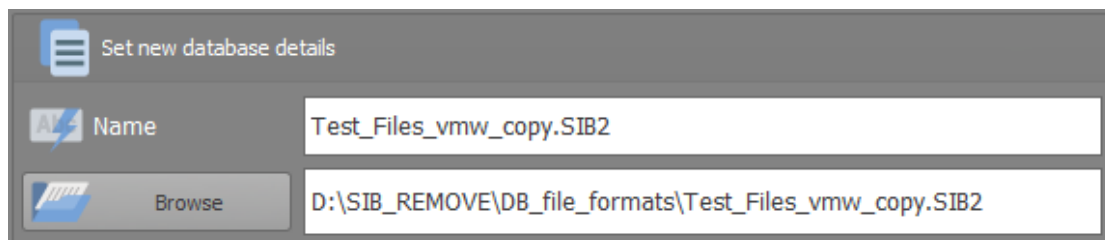
Click on *Import from existing database* button



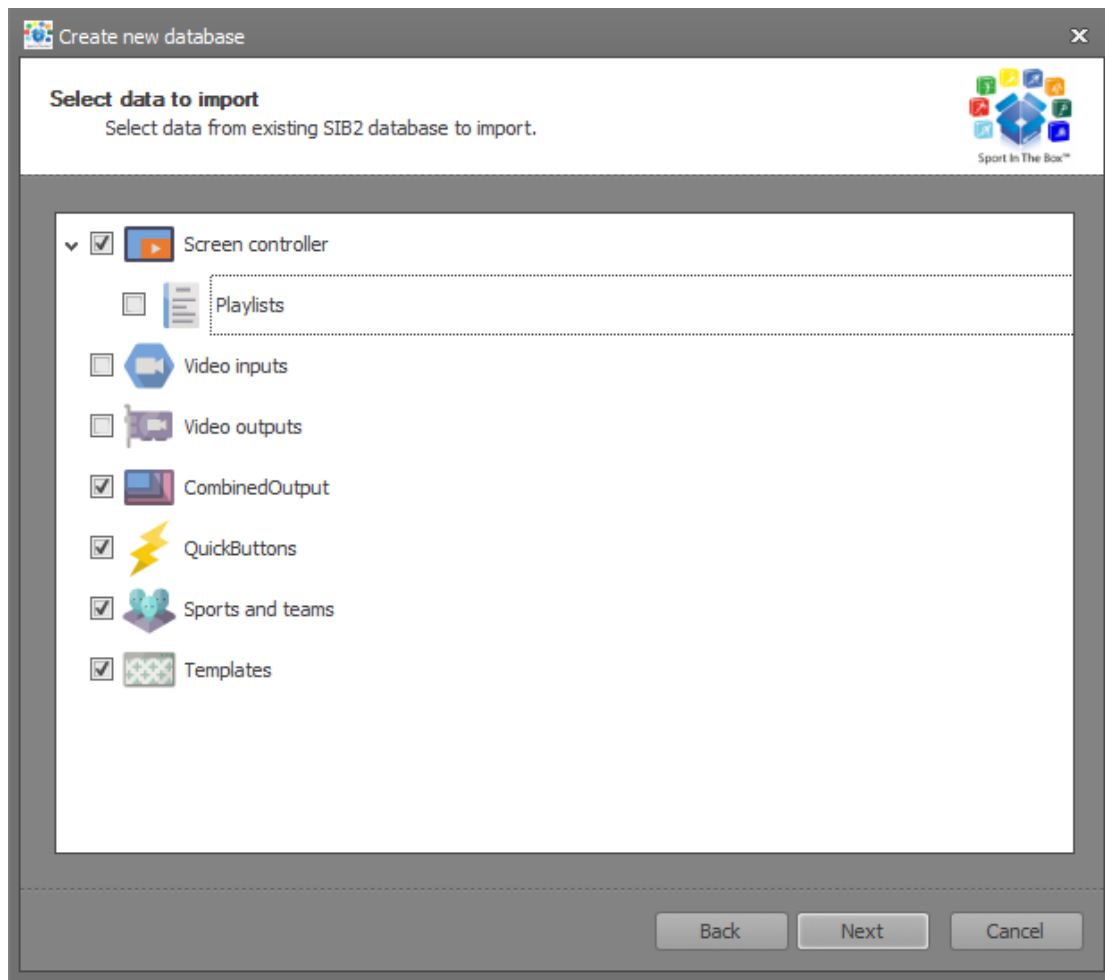
Click the *browse* button or on empty path area to select database.



New database name and path will be filled with suggested values, customize by typing or pressing the browse button.



Press *_next_* button and select settings to import.



Press *next* again to review the import settings.

Create new database

Database overview


Database information

Database name: Test_Files_vmw_copy.SIB2






Path: D:\SIB_REMOVE\DB_file_formats
Test_Files_vmw_copy.SIB2

Description: Test_Files_vmw_copy.SIB2

Sport: Floorball

 Sport In The Box™

Selected data to import

	Screen controller
	CombinedOutput
	QuickButtons
	Sports and teams
	Templates

Check your information above and press Finish to create the database.

Back Finish Cancel

Press *Finish* to import data, window will close after the import and new database will be added to the start screen.