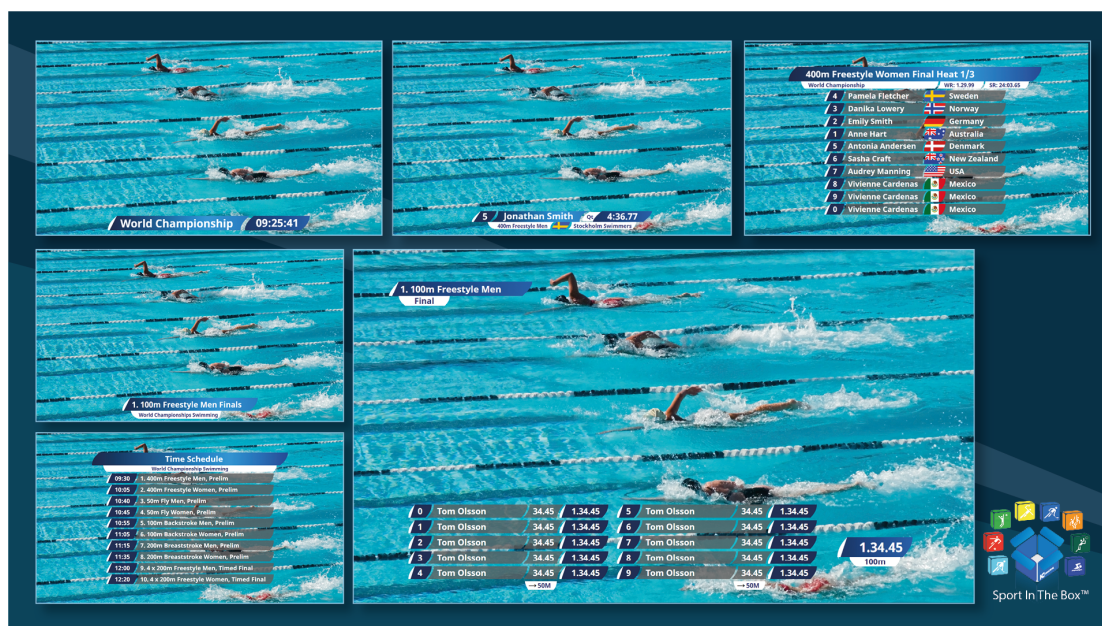


# Sport In The Box Support

[Knowledgebase](#) > [Template packs](#) > [Swimming](#) > [Swimming TV - Settings overview](#)

## Swimming TV - Settings overview

Josefin Ström - 2024-03-13 - [Comments \(0\)](#) - [Swimming](#)



## The Swimming TV Template pack includes the following templates:

- Countdown template
- Competition presentation, for presenting competition, events or heats.
- Daytime presentation
- Name presentation
- Record presentation
- Schedule
- Timekeeping for

## Template details and settings



## □ Competition

Template is used for all three of the Sport in the Box buttons "Competition", "Event" and "Heat" presentations.

## □ General styling

- Set colors for all parts of the graphic as well as text colors and style.
- Possibility scale the template for smaller or bigger resolutions.
- Override competition logo uses image in template settings instead of competition logo set in Swimming Settings in Sport in the Box. Images are 240x120 png format.

## □ Sponsors

- 3 different sources for the images, which determines the names of the files you want to use. Sponsor logos uses 240x120px in png format.
- Eventnumber: Files should be named with [eventnumber].png, e.g "14.png".
- Static image: Set the chosen image in "Static image" setting below. Shows the same image regardless of event. Can use different format than png but needs to be an image.

- Event sponsor (only Swimify): Files should be named same way as sponsors are named in Swimify Meet Manager, e.g “IC Control Media.png”
- Remember setting the folder where the images are stored on the computer.



## □ Countdown

Countdown template can be used to show countdown to the end of warmup or any other time you want to countdown to. The time is set in the Swimming Settings, where the main text to display during countdown will be set as well as what text should be used after countdown.

## □ General styling

- Set colors for all parts of the graphic as well as text colors and style.
- Possibility scale the template for smaller or bigger resolutions.
- Override competition logo uses image in template settings instead of competition logo set in Swimming Settings in Sport in the Box. Images are 240x120 png format.



## ☐ Daytime

Template used for displaying current time and competition name. In template settings you can also write a custom text to display together with the time and competition logo.

## ☐ General styling

- Set colors for all parts of the graphic as well as text colors and style.
- Possibility scale the template for smaller or bigger resolutions.
- Override competition logo uses image in template settings instead of competition logo set in Swimming Settings in Sport in the Box. Images are 240x120 png format.



## □ List

The list template can be used to display start- and resultlists as well as victory ceremony.

## □ General styling

- Set colors for all parts of the graphic as well as text colors and style.
- Possibility scale the template for smaller or bigger resolutions.
- Override competition logo uses image in template settings instead of competition logo set in Swimming Settings in Sport in the Box. Images are 240x120 png format.
- Possibility to make the list more opaque, to show some of the background through it.
- Use medal colors shows the number 1, 2 and 3 in gold, silver and bronze when showing the victory ceremony.

## □ General content settings

- Show records - adds a row of event records under the header
- Show status - adds a plate with notes on the result if existing.
  - OBS: Not all systems have a note field or a qualification field. If

the system does not have it, it won't show.

- Show WA points - replaces time with World Aquatics points when showing results.
- Auto hide after 10 seconds

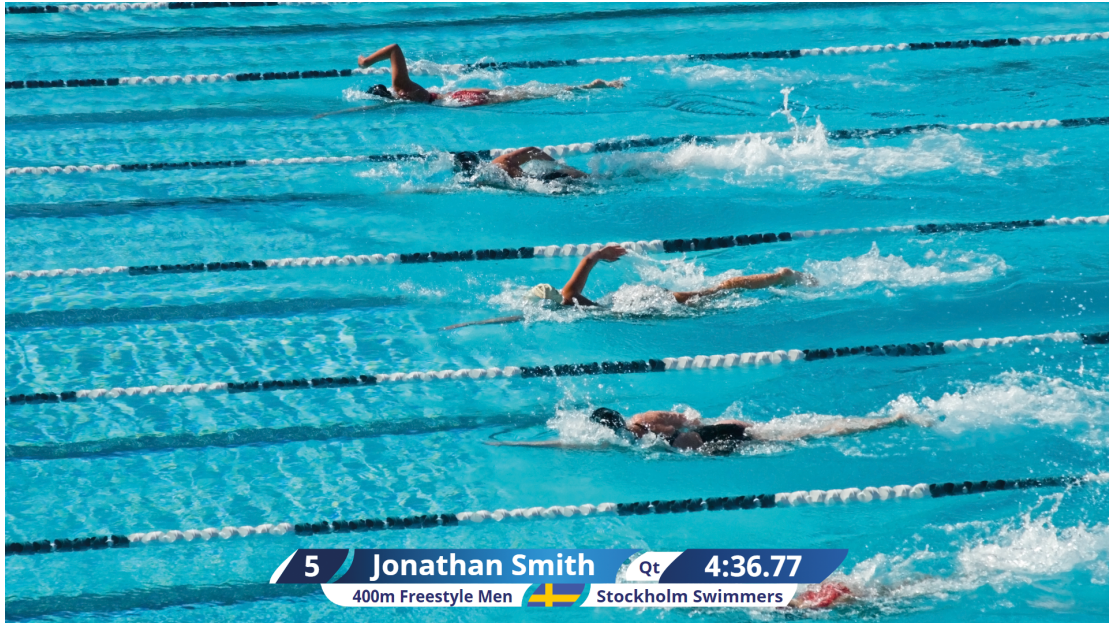
## □ **Club logo / flag settings**

- Two main modes for image shown as club logo or flag:
  - Show flags - uses flags from SIB Flags folder, using NationCode as filename
  - Show club logos - uses images from folder in separate setting to display as club logo. Adjust club logo source to change what the file name should be like, e.g Nation for "Sweden.png" or ClubShort for "HS.png".  
Uses png files.
- Adjustable sources for club name to account for different data coming from different data handling systems. That way, it is possible to show nation or club name

## □ **Sponsors**

- 3 different sources for the event sponsor images in the header, which determines the names of the files you want to use. Sponsor logos uses 240x120px in png format.
  - Eventnumber: Files should be named with [eventnumber].png, e.g "14.png".
  - Static image: Set the chosen image in "Static image" setting below. Shows the same image regardless of event. Can use different format than png, but needs to be an image.
  - Event sponsor (only Swimify): Files should be named same way as sponsors are named in Swimify Meet Manager, e.g "IC Control Media.png"
  - Remember setting the folder where the images are stored on the computer.

- Separate settings for lane sponsors, which will be shown on each lane in startlists. Images must be numbered same as the lanes and be found in the folder decided in the settings.



## □ Name presentation

Present swimmers either with entry information or results.

## □ General styling

- Set colors for all parts of the graphic as well as text colors and style.
- Possibility scale the template for smaller or bigger resolutions.
- Show points on results
  - Points can only be shown if you are using Swimify Meet Manager/Timekeeping. There are three different modes to show points:
    - AQUA Points - overrides any settings in Swimify Meet Manager/Timekeeping and shows AQUA points for all swimmers, regardless of if they are para swimmers or if the event is sorted by AQUA points
    - WPS Points - overrides any settings in Swimify Meet Manager/Timekeeping and only shows WPS points for para swimmers or in para events, disregarding if event is sorted by AQUA points in Swimify
    - Control by Swimify - this setting takes in account if sort by AQUA points is selected, then AQUA points will be shown for all swimmers in that event. Otherwise, if the event is a para event or the swimmer is a para swimmer the WPS will show. If neither applies, no points will be shown.

- None - Shows no points

## □ Club logo / flag settings

- Two main modes for image shown as club logo or flag:
  - Show flags - uses flags from SIB Flags folder, using NationCode as flagname
  - Show club logos - uses images from folder in separate setting to display as club logo. Adjust club logo source to change what the file name should be like, e.g Nation for "Sweden.png" or ClubShort for "HS.png".  
Uses png files.
  - Adjustable sources for club name to account for different data coming from different data handling systems. That way, it is possible to show nation or club name.

## □ Sponsors

- Possibility to show lane sponsors. Images must be numbered same as the lanes and be found in the folder decided in the settings.



## □ Schedule

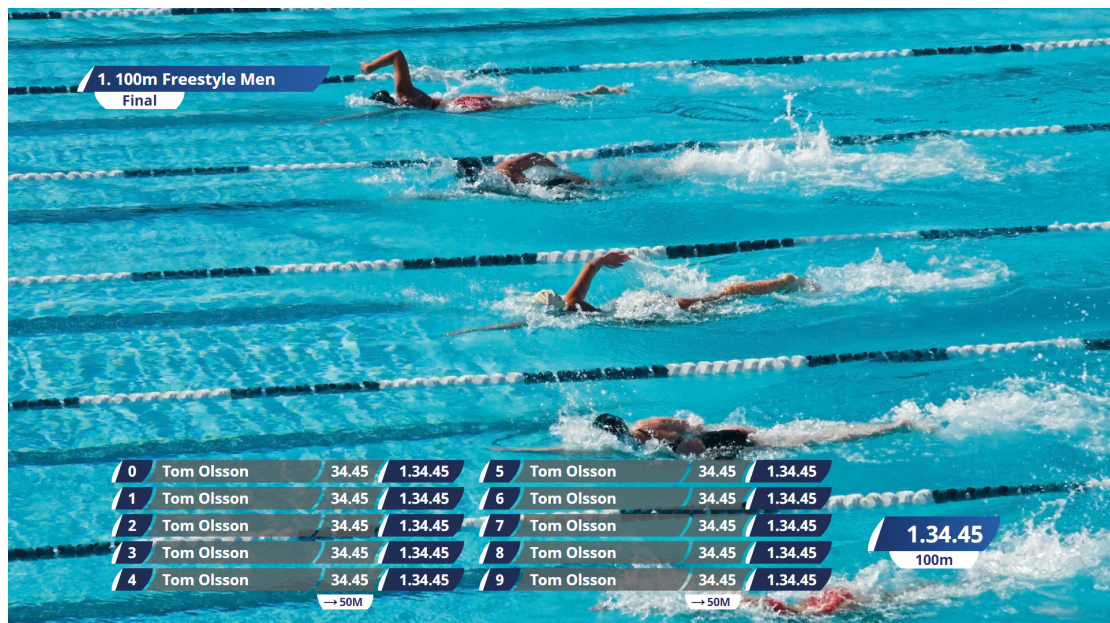
Show competition schedule with starting times and event names.

## □ General styling

- Set colors for all parts of the graphic as well as text colors and style.
- Possibility scale the template for smaller or bigger resolutions.
- Override competition logo uses image in template settings instead of competition logo set in Swimming Settings in Sport in the Box. Images are 240x120 png format.
- Possibility to provide a bottom logo, shown below the list of events. This image has a 160x70px format.
- Possibility to make the list less opaque, to show some of the background through it.

## □ General content settings

- Heading - chose what should be the heading of the template
- Hide events in past time to only show future events
- Start from row nr lets you skip events and hide any events before a certain row



## □ Timekeeping

General template for showing timekeeping, shows the heat information as well as running time with splits as they happen.

## □ **General styling**

- Set colors for all parts of the graphic as well as text colors and style.
- Possibility scale the template for smaller or bigger resolutions.

## □ **Club logo / flag settings**

- Two main modes for image shown as club logo or flag:
  - Show flags - uses flags from SIB Flags folder, using NationCode as flagname
  - Show club logos - uses images from folder in separate setting to display as club logo. Adjust club logo source to change what the file name should be like, e.g Nation for "Sweden.png" or ClubShort for "HS.png".  
Uses png files.
- Adjustable sources for club name to account for different data coming from different data handling systems. That way, it is possible to show nation or club name.

## □ **General content settings**

- Show event - Gives you the power of deciding where the plate showing event name should be placed.
- Show reaction times - Enable or disable the display of reaction times at the start of the race.
- Show backup times - Update times on previously displayed rows (does not reorder).
- Number of splits to show & number of splits per column
  - Used to distribute rows of splits. Adjustable to balance the columns depending on number of lanes being used.
  - E.g: A competition with 10 lanes would show 10 splits in 5 splits per column, to make the columns even in size. When using 8 lanes, show 4 splits per column to balance the height.

- Splits hide time - Determines how long the splits should be shown after the first split has shown.
- Running time - Select how the running time should stop. Only applicable on some timekeeping systems.