

Sport In The Box Support

Kunskapsbas > Common questions > How to create new database with old database as template

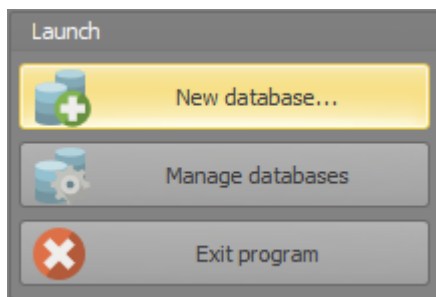
How to create new database with old database as template

Dmitri Peredera - 2023-10-23 - Kommentarer (0) - Common questions

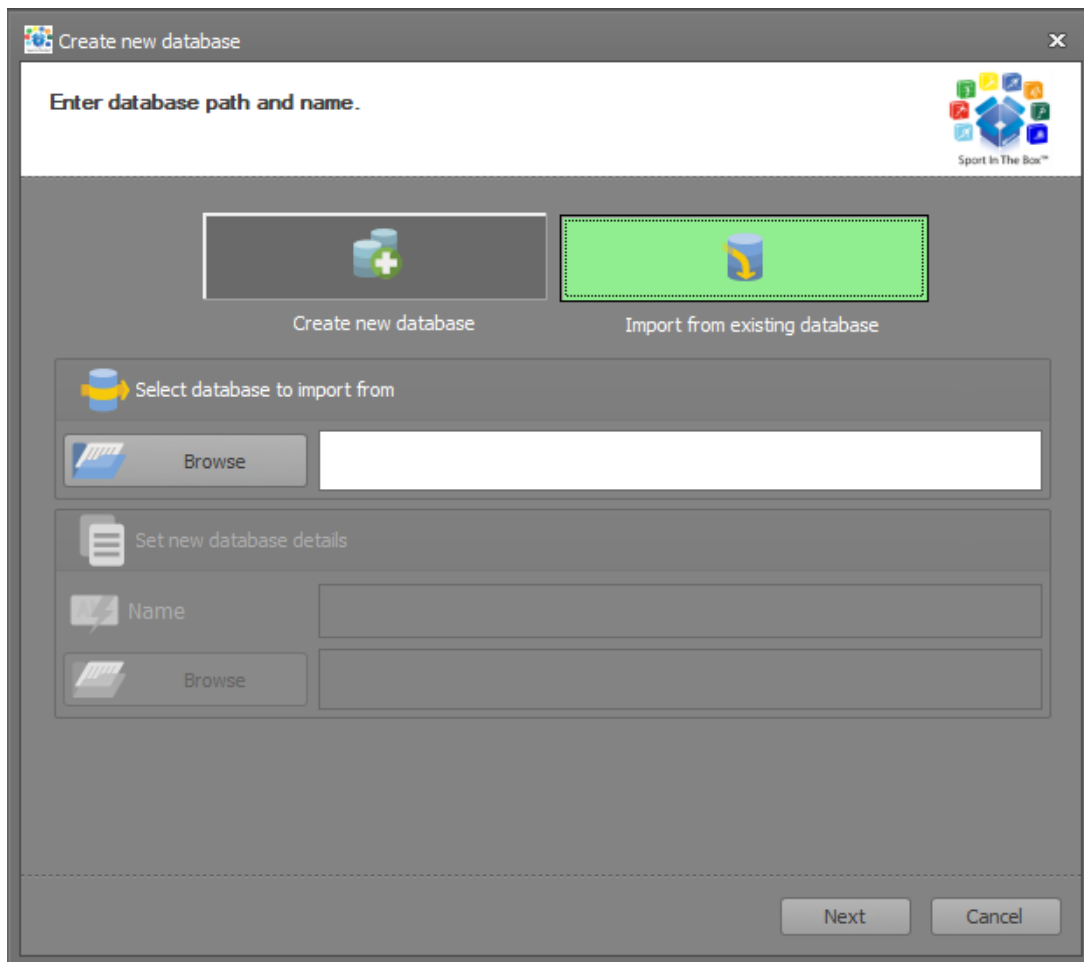
When creating new database, it is sometimes useful to copy configuration from existing database.

Note, **only works for SIB2 files.**

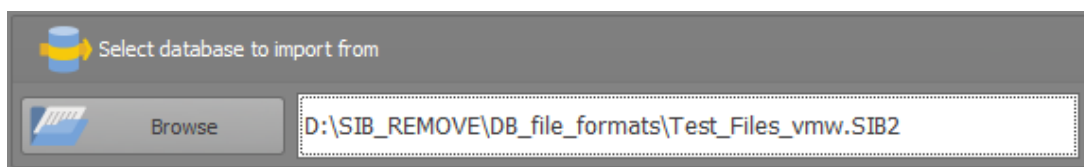
From the start screen, press *New database...*



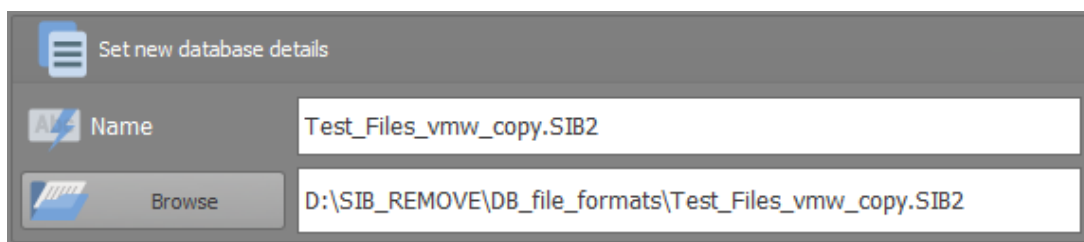
Click on *Import from existing database* button



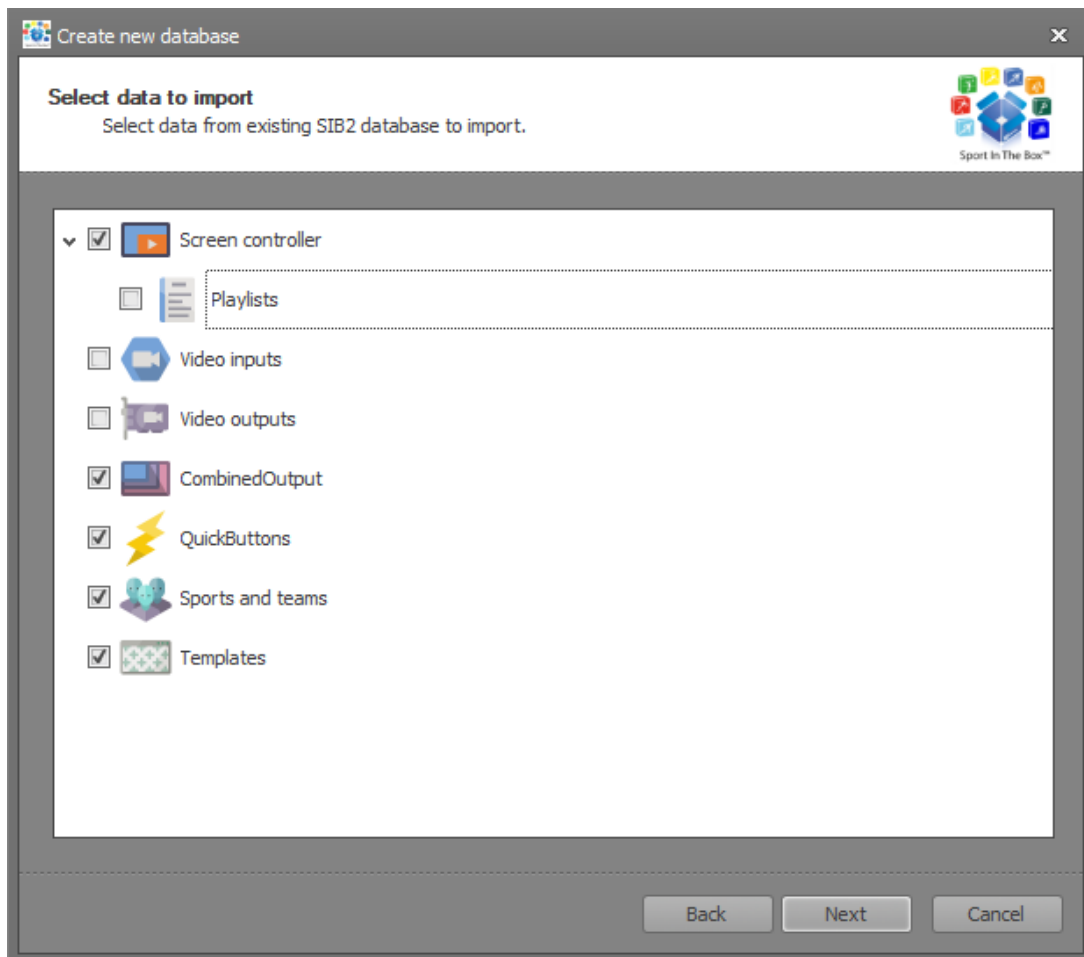
Click the *browse* button or on empty path area to select database.



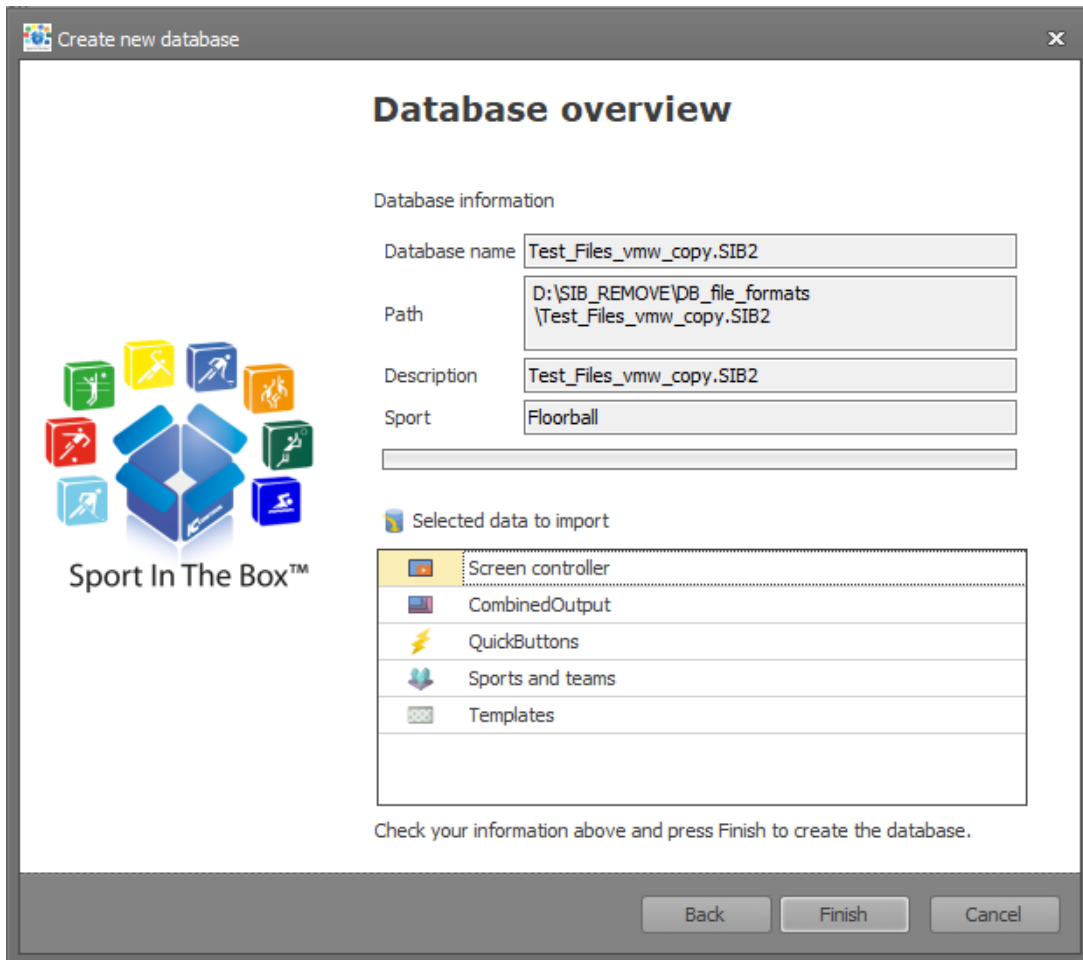
New database name and path will be filled with suggested values, customize by typing or pressing the browse button.



Press *_next_* button and select settings to import.



Press *next* again to review the import settings.



Press *Finish* to import data, window will close after the import and new database will be added to the start screen.