

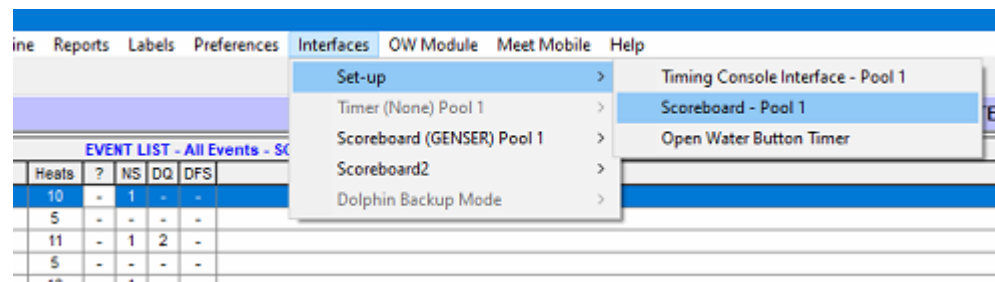
# Sport In The Box Support

[Kunskapsbas](#) > [Common questions](#) > [How to setup SITB2 with Hytek](#)

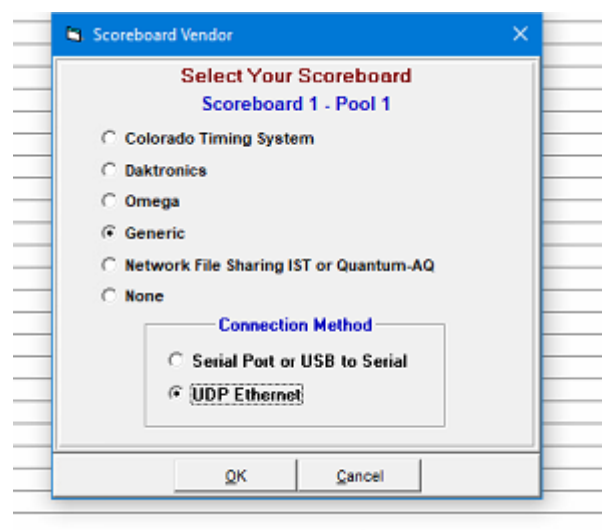
## How to setup SITB2 with Hytek

Erik Berglund - 2021-04-26 - [Kommentarer \(0\)](#) - [Common questions](#)

To configure SITB2 with Hytek using UDP port go to:

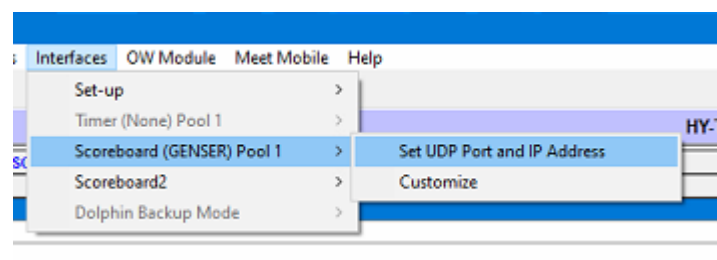


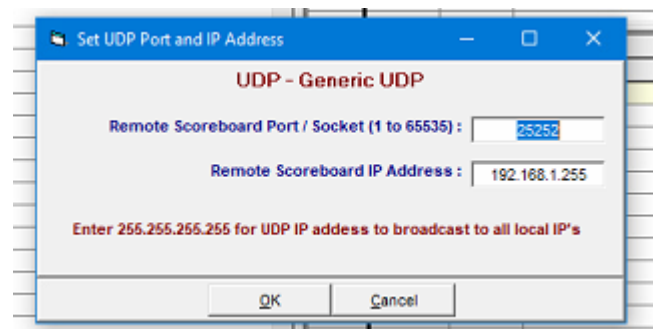
Set it to Generic and UDP. (Also possible to use serial but then you need a serial connection between Hytek computer and SITB2).



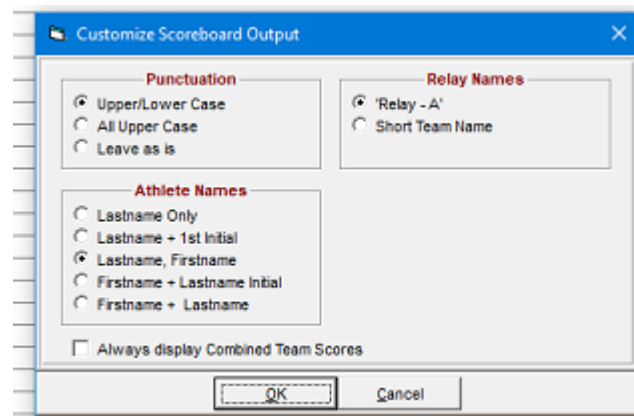
You also need to change IP adress here:

The selected address should be the one of the SITB2 computer.





And check:



Best Regards

Erik