

Sport In The Box Support

Kunskapsbas > Combined Output > How to tile with VideoWindow

How to tile with VideoWindow

Dmitri Peredera - 2023-10-23 - Kommentarer (0) - Combined Output

LED screens are usually visible in Windows as regular monitors and have resolution like 800X600PX.



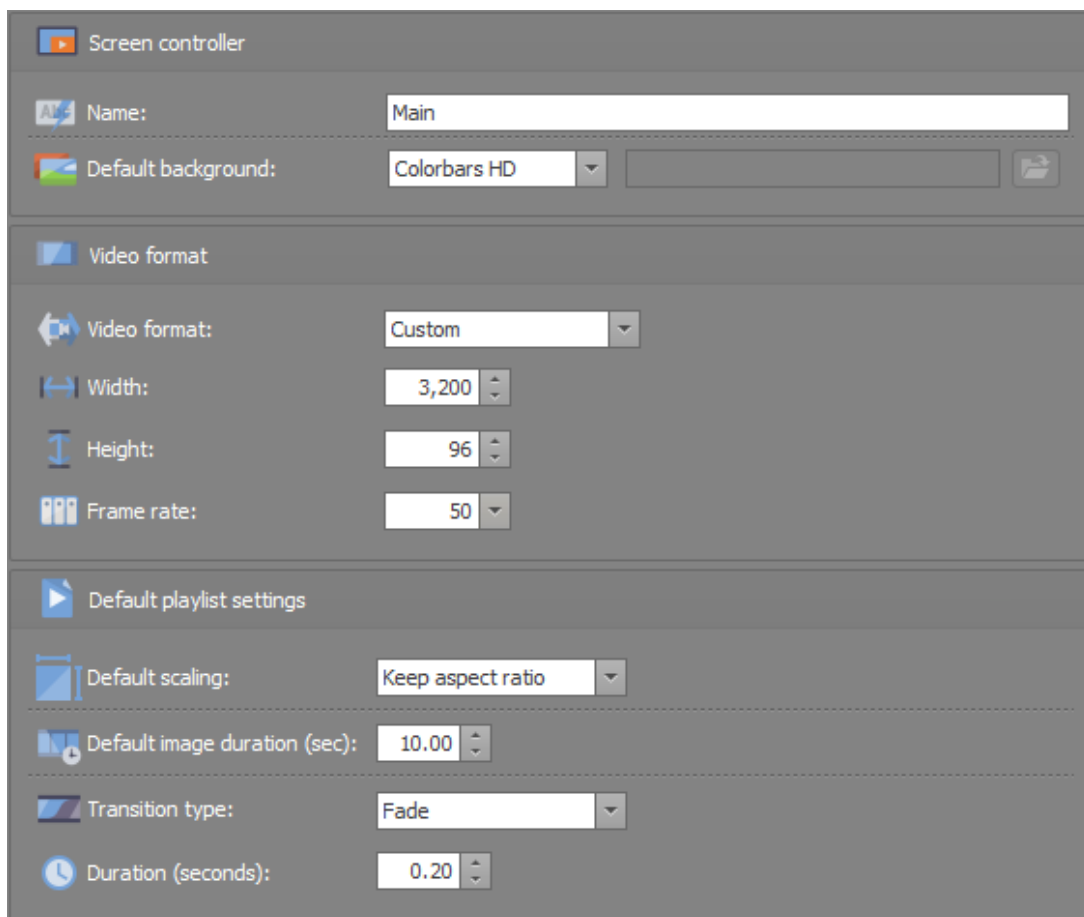
The picture from video above is **3200 x 96px** and represents a pre-manufactured content where each ICC logo can be a different vendor. It can be scaled with the *CombinedOutput*, but other way is to scale it with the *VideoWindow*.



Configure ScreenController

Got to the ScreenController settings and change vide format to *Custom* at **3.200 x 96 at 50fps**,

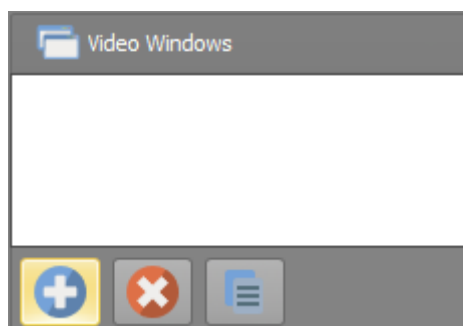
For the purpose of the tutorial, change background to white or color bars.



Configure VideoWindows

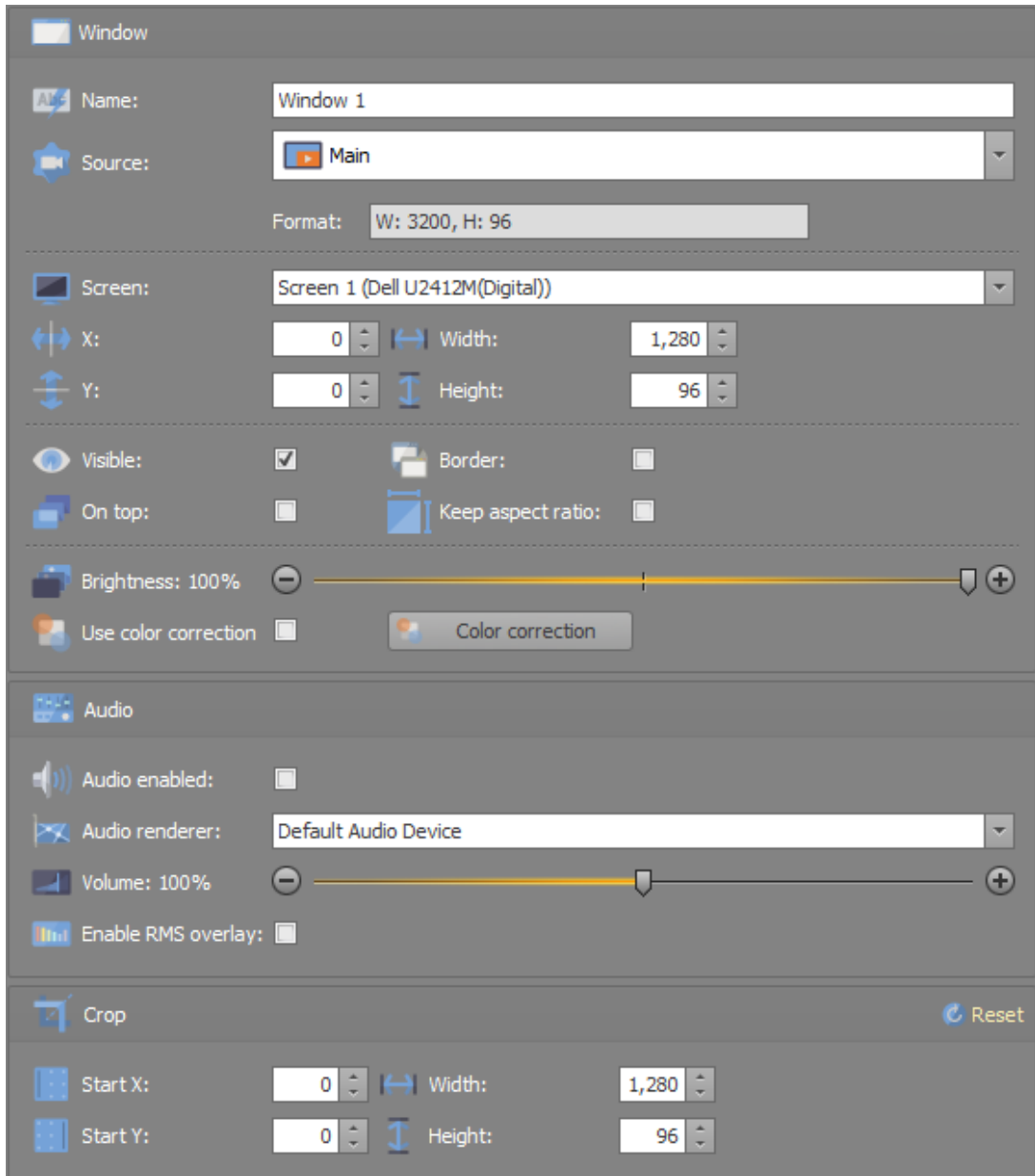
Go to the *VideoWindow* settings and press *add* button to create new video window.

Window position can be changed either by changing values in settings or moving selected window.



Create first *VideoWindow* and set the source to the *Main ScreenController*. *Main ScreenController* should be **3200 X 96px**.

Change window *width* and *crop width* to 1280.



Press *copy* button and copy window two times.



Change values to match the following table.

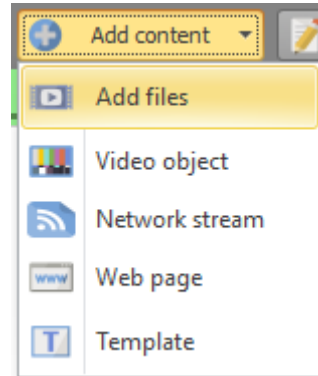
Name	X	Y	Width	Height	Start X	Start Y	Crop width	Crop Height
Window 1	0	0	1280	96	0	0	1280	96
Window 2	0	96	1280	96	1280	0	1280	96
Window 3	0	192	640	96	2560	0	640	96

Note that last *Window 3* has less content that fit on the whole row. Both *width* and *crop*

width are set to the remaining content width.

Add files

Close settings window, go to the playlist and add file with the format of **3200 x 96px** and loop it.



Start playback.

The result, with the borders enabled will look like that:

